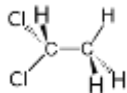


1,1,1-TCA

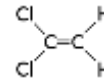
- 1,1,1-Trichloroethane or methyl chloroform
- Used mainly as a solvent for removing grease
- Present in household cleaners, glues, and aerosol sprays
- Aerothene[®], Chlorothene[®], and Inhibisol[®]



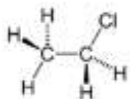
1,1-DCA

- 1,1-Dichloroethane
- Primarily used as feedstock for synthesis for 1,1,1-Trichloroethane
- Used for solvent for plastics, oils, and fats
- Also a degreaser, a fumigant for insecticides, and has also been used as an inhalational anesthetic

1,1-DCE

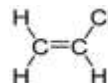


- 1,1 Dichloroethene
- Originally used as a precursor for cling-wrap for food
- Commonly used as polymerization of polyvinylidenechloride and a semiconductor device fabrication for growing high purity SiO₂
- Saran[®]



ETHYL CHLORIDE

- Chloroethane or monochloroethane
- Once used in producing tetraethyllead (TEL), an anti-knock gasoline additive
- Colorless, flammable gas or refrigerated liquid with a sweet odor
- Used as a refrigerant, an aerosol spray propellant, an anesthetic, and a blowing agent for foam packaging
- Today it is used in treating cellulose to make ethylcellulose, a thickening agent and binder in paints, cosmetics and similar products.



VINYL CHLORIDE

- Chloroethene
- Important in the production of the polymer polyvinyl chloride (PVC)
- Until 1974 it was used in aerosol spray propellant
- Was briefly used as an inhalational anaesthetic